

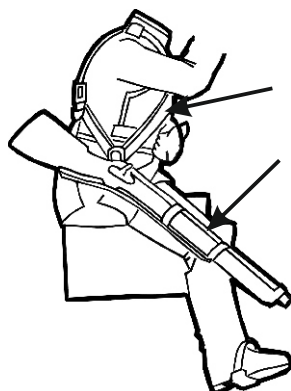
SEVEN YEARS WAR

Painting Instructions

PRUSSIA - 9TH CUIRASSIER REGT 1757

3141
3142
3143
3144

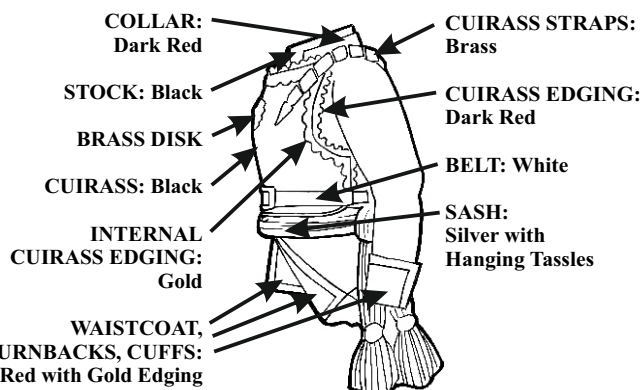
TROOPER CARBINE



CARBINE BELT:
White with Silver Fitting

CARBINE:
Dark Brown with Gunmetal Fittings and White Sling

OFFICER



COLLAR:
Dark Red

STOCK: Black

BRASS DISK

CUIRASS: Black

INTERNAL
CUIRASS EDGING:
Gold

WAISTCOAT,
TURNBACKS, CUFFS:
Dark Red with Gold Edging

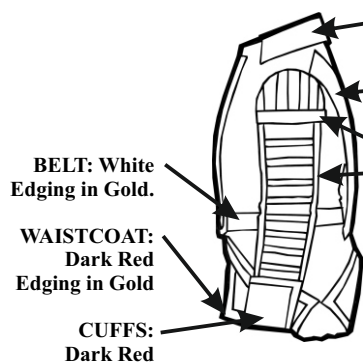
CUIRASS STRAPS:
Brass

CUIRASS EDGING:
Dark Red

BELT: White

SASH:
Silver with
Hanging Tassles

TRUMPETER



COLLAR:
Dark Red

HANGING SLEEVES:
Dark Red Edging in Gold

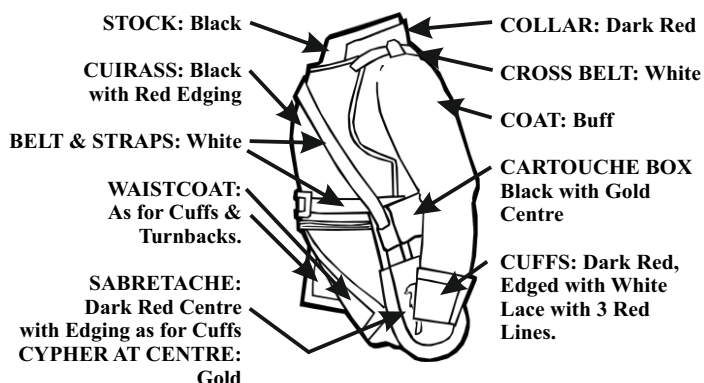
BELT: White
Edging in Gold.

WAISTCOAT:
Dark Red
Edging in Gold

CUFFS:
Dark Red

ALL LACE, COLLAR,
CUFF EDGING:
Gold with Thin
Central Red line

TROOPER



STOCK: Black

CUIRASS: Black
with Red Edging

BELT & STRAPS: White

WAISTCOAT:
As for Cuffs &
Turnbacks.

SABRETACHE:
Dark Red Centre
with Edging as for Cuffs
CYPHER AT CENTRE:
Gold

COLLAR: Dark Red

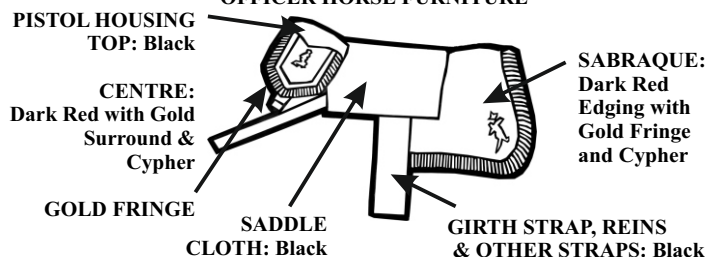
CROSS BELT: White

COAT: Buff

CARTOUCHE BOX
Black with Gold
Centre

CUFFS: Dark Red,
Edged with White
Lace with 3 Red
Lines.

OFFICER HORSE FURNITURE



PISTOL HOUSING
TOP: Black

CENTRE:
Dark Red with Gold
Surround &
Cypher

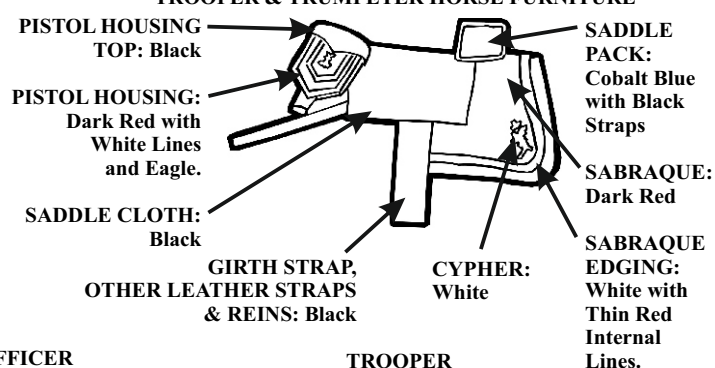
GOLD FRINGE

SADDLE
CLOTH: Black

GIRTH STRAP, REINS
& OTHER STRAPS: Black

SABRAQUE:
Dark Red
Edging with
Gold Fringe
and Cypher

TROOPER & TRUMPETER HORSE FURNITURE



PISTOL HOUSING
TOP: Black

PISTOL HOUSING:
Dark Red with
White Lines
and Eagle.

SADDLE CLOTH:
Black

GIRTH STRAP,
OTHER LEATHER STRAPS
& REINS: Black

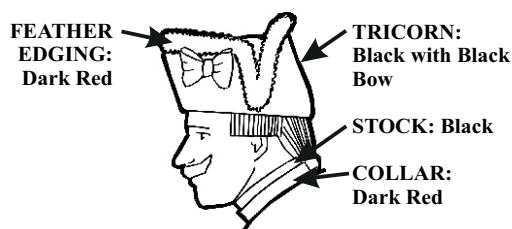
SADDLE
PACK:
Cobalt Blue
with Black
Straps

SABRAQUE:
Dark Red

SABRAQUE
EDGING:
White with
Thin Red
Internal
Lines.

CYPHER:
White

TRUMPETER



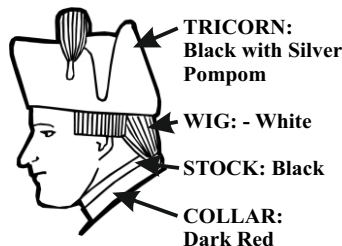
FEATHER
EDGING:
Dark Red

TRICORN:
Black with Black
Bow

STOCK: Black

COLLAR:
Dark Red

OFFICER



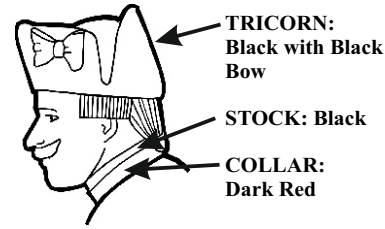
TRICORN:
Black with Silver
Pompom

WIG: - White

STOCK: Black

COLLAR:
Dark Red

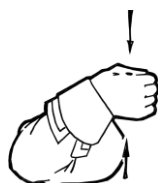
TROOPER



TRICORN:
Black with Black
Bow

STOCK: Black

COLLAR:
Dark Red



CREATING THE STANDARD-BEARER:

Use the TROOPER body and parts 3 and 5 from the accessory mould. Part 5 (the Standard-bearer's arm) has little indents on the upper and lower parts of the closed hand. These are locator points through which to drill a receiving hole. The standard pole can then be made from one of the metal rods included with the kit. Part 3 is the tip which should be attached to the top of the pole. Illustrations and colours of all the cuirassier standards can be found at kronoskaf.com, Project Seven Years War.